

TWO-WAY CLAPPER INLET



Figure No. 6010-6042

An Auxiliary Inlet Connection with 500 G.P.M. minimum inlet capacity. Used to supplement fire protection water supply. Flush design enhances appearance and provides unobstructed passage.

STANDARD EQUIPMENT: Cast brass body, double clapper inlets, brass plate, adapters and plugs with chain. Select size and outlet connection by Figure Number.

SPECIFY THREAD AND BRANDING.

BRANDING: "Standpipe", "Auto Sprk", "Combination Standpipe and Sprinkler Systems", "Dry Standpipe". Special lettering available.

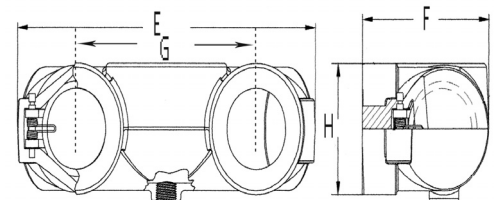
OPTIONAL FINISHES:

PB - Polished Brass

PC - Polished Chrome Plated

U/L Listed

NY BSA-MEA APPROVED



***Diagram of Bottom & Top Body**

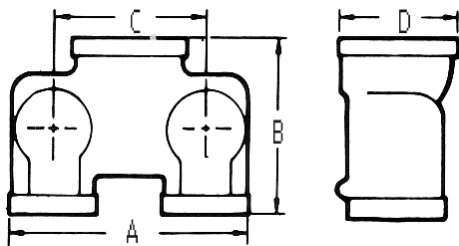


Diagram of Back Body

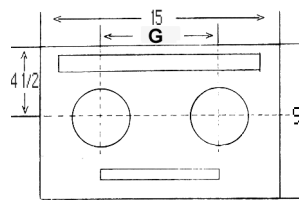


Diagram of Plate for 6030 Series

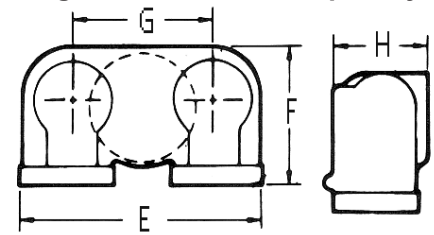


Diagram of Bottom & Top Body

| OUTLET LOCATIONS | | | Size | DIMENSIONS | | | | | | | |
|------------------|--------------------|-----------------|-------------------|------------|-------|-------|-------|--------|-------|-------|-------|
| BACK Fig. No. | BOTTOM Fig. No. | TOP Fig. No. | | A | B | C | D | E | F | G | H |
| 6010 | | | 4 X 2 1/2 X 2 1/2 | 11 1/2 | 6 1/2 | 7 | 5 1/4 | | | | |
| | *6011 | *6012 | 4 X 2 1/2 X 2 1/2 | | | | | 12 1/2 | 5 3/8 | 7 | 4 |
| 6020 | | | 6 X 2 1/2 X 2 1/2 | 11 1/4 | 7 3/8 | 7 5/8 | 7 1/4 | | | | |
| | 6021 | 6022 | 6 X 2 1/2 X 2 1/2 | | | | | 12 | 9 3/8 | 7 5/8 | 5 3/4 |
| 6030 | | | 4 X 3 X 3 | 12 1/4 | 8 1/4 | 7 5/8 | 5 1/2 | | | | |
| | *6031 | *6032 | 4 X 3 X 3 | | | | | 12 5/8 | 5 3/8 | 7 5/8 | 4 |
| 6035 | | | 5 X 3 X 3 | 12 1/4 | 8 3/4 | 7 5/8 | 7 3/8 | | | | |
| | 6036 | 6037 | 5 X 3 X 3 | | | | | 12 | 9 1/2 | 7 5/8 | 5 7/8 |
| 6040 | | | 6 X 3 X 3 | 12 1/4 | 8 3/4 | 7 5/8 | 7 3/4 | | | | |
| | 6041 | 6042 | 6 X 3 X 3 | | | | | 12 | 9 1/2 | 7 5/8 | 5 7/8 |