

TWO-WAY CLAPPER INLET WITH SILLCOCK



Figure No. 6050-6082

An Auxiliary Inlet Connection with 500 G.P.M. minimum inlet capacity. Plate extension with hole for sillcock connection used to supplement fire protection water supply. Flush design enhances appearance and provides unobstructed passage.

STANDARD EQUIPMENT: Cast brass body, double clapper inlets, plate with hole for Sillcock connection, adapters, plugs with chains and sillcock. Select size and outlet connection by Figure No. **SPECIFY THREAD AND BRANDING.**

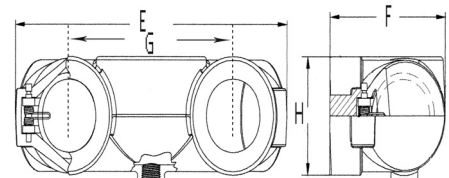
BRANDING: "Standpipe", "Auto Spkr.", "Combination Standpipe and Sprinkler Systems", "Dry Standpipe". Special lettering available.

OPTIONAL FINISHES:

- PB - Polished Brass
- PC - Polished Chrome Plated

U/L Listed

NY MEA-BSA APPROVED



*Diagram of Bottom & Top Body

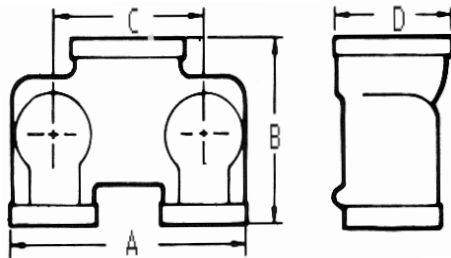


Diagram of Back Body

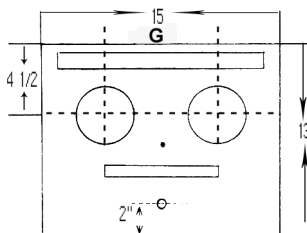


Diagram of Plate for 6070 Series

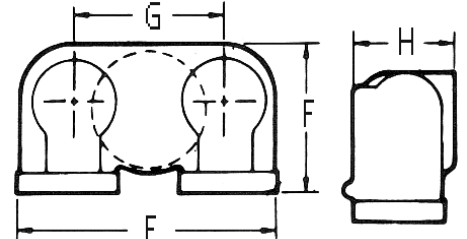


Diagram of Bottom & Top Body

OUTLET LOCATIONS			Size	DIMENSIONS							
BACK Fig. No.	BOTTOM Fig. No.	TOP Fig. No.		A	B	C	D	E	F	G	H
6050			4 X 2 1/2 X 2 1/2	11 1/2	6 1/2	7	5 1/4				
	*6051	*6052	4 X 2 1/2 X 2 1/2					12 1/2	5 3/8	7	4
6060			6 X 2 1/2 X 2 1/2	11 1/4	7 3/8	7 5/8	7 1/4				
	6061	6062	6 X 2 1/2 X 2 1/2					12	9 3/8	7 5/8	5 3/4
6070			4 X 3 X 3	12 1/4	8 1/4	7 5/8	5 1/2				
	*6071	*6072	4 X 3 X 3					12 5/8	5 3/8	7 5/8	4
6075			5 X 3 X 3	12 1/4	8 3/4	7 5/8	7 3/8				
	6076	6077	5 X 3 X 3					12	9 1/2	7 5/8	5 7/8
6080			6 X 3 X 3	12 1/4	8 3/4	7 5/8	7 3/4				
	6081	6082	6 X 3 X 3					12	9 1/2	7 5/8	5 7/8