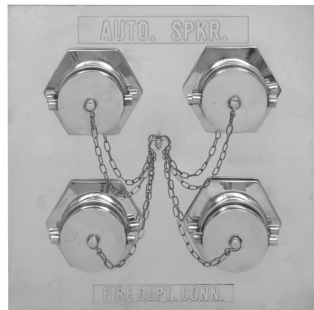


**FOUR-WAY SQUARE CLAPPER INLET**



**Figure No. 6290-6294**

An Auxiliary Inlet Connection with 1,000 G.P.M. minimum inlet capacity. Flush design enhances appearance and provides unobstructed passage.

**STANDARD EQUIPMENT:** Cast brass four-way square inlet body with drop clappers on each inlet and 6" outlet connection as selected by figure number; brass plate with branding as selected; 3" hex female NPT x 2 1/2" pin lug swivel female fire dept. thread inlet connection (can be furnished with 3" fire dept. thread when required); with plugs and chains.

**SPECIFY BODY STYLE, BRANDING AND THREAD.**

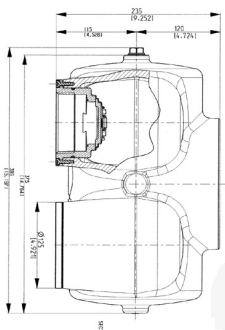
**BRANDING:** "Standpipe", "Auto Spkr.", "Combination Standpipe and Sprinkler Systems", "Dry Standpipe". Special lettering available.

**FINISH:** Polished Brass

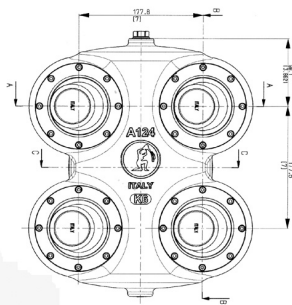
**OPTIONAL FINISHES:**

PC - Polished Chrome Plated

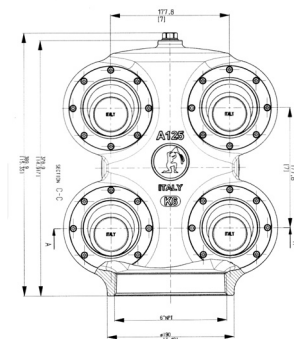
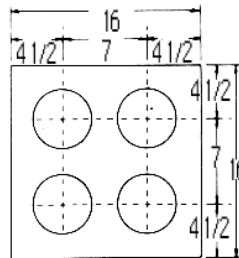
Fig. No.	Body Style
6290	Back Outlet
6291	Top Outlet
6292	Right Side Outlet
6293	Left Side Outlet
6294	Bottom Outlet



**Diagram of 6290 Body**



**Diagram of 4-Way Square Plate**



**Diagram of 6291-6294 Body**