

CLAPPER SNOOT STYLE

An auxiliary inlet connection, used to supplement the fire protection water supply. Bodies do not have clappers. Choice of spring check or clapper snoots, depending upon local code requirements. Used on Dry Standpipe systems and on Wet Standpipe Systems. When used on a Wet System, a separate swing check valve must also be installed.

STANDARD EQUIPMENT: Cast brass inlet body, 4", 6" or 8" outlet connection as selected by figure number; brass plate with branding as selected; clapper snoot (see Page 6-21); with plugs and chains. **SPECIFY BODY STYLE, BRANDING AND THREAD.**

BRANDING: "Standpipe", "Auto Spkr.", "Combination Standpipe and Sprinkler Systems", "Dry Standpipe". Special lettering available.

FINISH: Polished Brass

OPTIONAL FINISHES: PC - Polished Chrome Plated

HORIZONTAL UNITS		
Fig. No.	Size Outlet	Type
*6310	4"	2-Way
6315	6"	3-Way
6320	6"	4-Way
6325	6"	6-Way
6330	8"	6-Way

VERTICAL UNITS		
Fig. No.	Size Outlet	Type
*6312	4"	2-Way
6317	6"	3-Way
6322	6"	4-Way
6327	6"	6-Way
6332	8"	6-Way

* These units are furnished with steel bodies. Cast Brass bodies available as an option.

SQUARE UNITS		
Fig. No.	Size Outlet	Type
6334	4"	2-Way
6335	4"	3-Way



Figure No. 6310

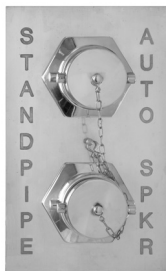


Figure No. 6312



Figure No. 6320



Figure No. 6322



Figure No. 6327-6332

CLAPPER SNOOT STYLE INLETS

PLATE DIMENSIONS

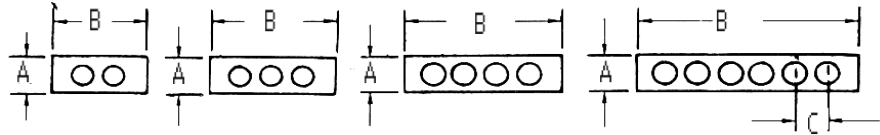
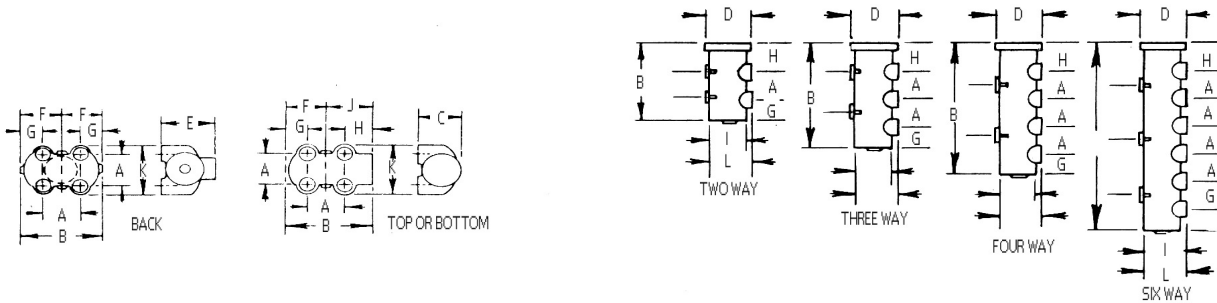
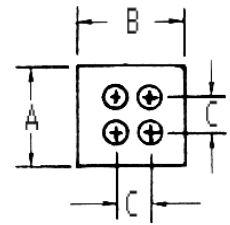


FIGURE NUMBER		NO. INLETS	DIMENSIONS		
HORIZONTAL	VERTICAL		A	B	C
Fig. No.	Fig. No.				
6310	6312	2	9	15	7
6315	6317	3	9	19.875	7
6320	6322	4	9	30	7
6325	6327	6	9	44	7
6330	6332	6	9	44	7
SQUARE					
6334 Back Outlet		4	16	16	7
6335 Top Outlet		4	16	16	7



BODY DIMENSIONS

FIGURE NUMBER		NO. INLETS	OUTLET SIZE	DIMENSIONS											
HORIZONTAL	VERTICAL			A	B	C	D	E	F	G	H	I	J	K	L
Fig. No.	Fig. No.														
6310	6312	2	4	7	15 1/4		6			3 1/4	5	5			5 1/4
6315	6317	3	5	7	22 1/4		6 3/4			3 1/4	5	6			6 1/4
6320	6322	4	6	7	28 3/4		7 5/8			2 3/4	5	7 1/2			7 5/8
6325	6327	6	6	7	43		7 1/2			3	5	7 1/2			7 5/8
6330	6332	6	8	7	43		9 9/16			3	5	7 1/2			7 5/8
SQUARE															
6334 Back Outlet		4	6	7	15 1/4	7 7/8		9 1/4	7 3/4	4 1/4	4 3/8		7 1/8	12 21/32	
6335 Top Outlet		4	6	7	16 31/64	7 7/8		8 3/4	7 3/4	4 1/4	4 3/8			11 4	



Figure No. 6315



Figure No. 6317



Figure No. 6325-6330



Figure No. 6334-6335

CLAPPER SNOOT STYLE INLETS



Figure No. 6337-6338

An auxiliary inlet with 1,000 G.P.M minimum inlet capacity, clapper snoot on each inlet. When used on a wet system a separate swing check valve must also be installed. Flush design desirable when appearance is a factor and provides unobstructed passage.

STANDARD EQUIPMENT: Cast brass four-way horizontal or vertical inlet body, 6" Back or Angle body as selected by figure number; brass plate with branding selected; clapper snoots (See page 6-21); with plugs and chains. **Body and snoots are U/L LISTED.SPECIFY BRANDING AND THREADS.**

BRANDING: "Dry Standpipe", "Standpipe", "Auto-Sprk." or "Combination Standpipe and Sprinkler Systems". Special lettering available.

FINISH: Polished Brass

OPTIONAL FINISH: PC Polished Chrome Plated

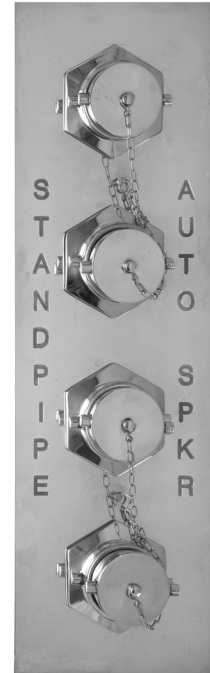


Figure No. 6339-6340

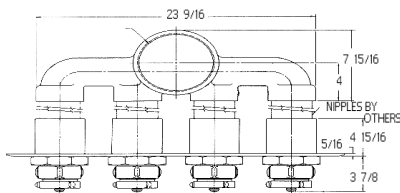


Diagram of 6338

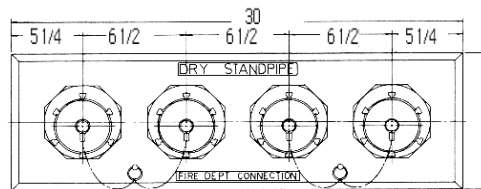


Diagram of plate for 6337 & 6338

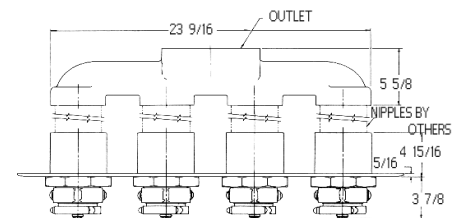


Diagram of 6337

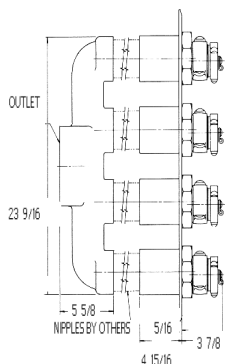


Diagram of 6339

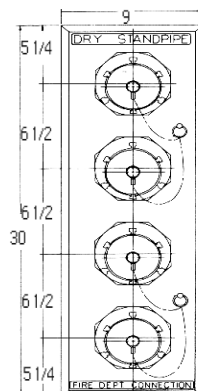


Diagram of plate for 6339 & 6340

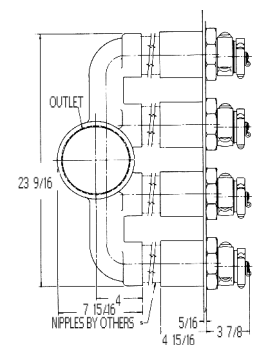


Diagram of 6340