

HUMP RACKS

For Wall or Pipe mounted hose storage.

STANDARD EQUIPMENT: All steel construction, red enamel finish, wall mounting brackets.

OPTIONAL:

Semi-automatic hose clamp.
Pipe clamps- SPECIFY SIZE

FACTORY MUTUAL APPROVED

Figure No.	Hose Size	Capacity			(Dimensions Inches)		
		Lt. WT.	SJRL	DJRL	Height	Width	Depth
7080	1 1/2"	100			20 7/8	29 3/4	4 1/8
7081	1 1/2"	150	50		27 7/8	33 1/2	4 1/8
7082	1 1/2"	200	100		38 7/8	39 3/4	4 1/8
7083	2 1/2"	100	50		20 7/8	29 3/4	5 5/8
7084	2 1/2"	150	50		27 7/8	33 1/2	5 5/8
7085	2 1/2"	200	100	50	38 7/8	39 3/4	5 5/8

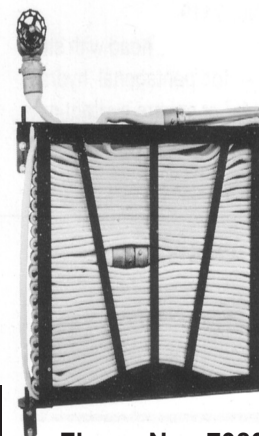
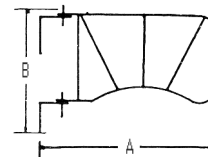


Figure No. 7080



IN-COLUMN RACK

Column mounted hose storage.

STANDARD EQUIPMENT: All steel construction. Red enamel finish. Hose is stored on five pins - piano hinge for 10" or 12" column - Capacity 100' of 1 1/2" SJ or DJ hose.

OPTIONAL: 7" or 8" Column size.

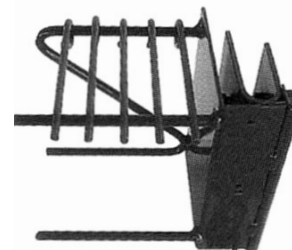


Figure No. 7088

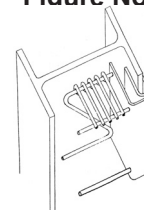


Figure No.	Size
7088	10" or 12"
7089	7" or 8"

HOSE HANGER

Protected area hose storage

STANDARD EQUIPMENT: All aluminum alloy or cadmium plated steel. Two piece design with bottom retainer and spring loaded top retainer.

Figure No.	Finish
7090	Aluminum
7095	Steel

Number of Loops	Hose Lengths		
	50'	75'	100'
2	12"		
3	8"	12"	
4	6"	9"	12"

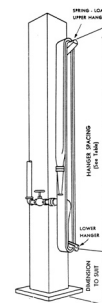


Figure No. 7090